



# **LIBERTY** **COMMON SCHOOL**

*Common Knowledge, Common Virtues, Common Sense*

**Liberty Common Elementary School**

**Carpool School**

**A Helpful Guide**

Liberty Common School is a carpool school. Parents are expected to drop off students in the morning and pick them up after school. We encourage all parents to carpool each day. The front office will publish a carpool list at the beginning of each year so that you can find and contact families that live close by.

### Times

Morning drop off times | 7:30-7:50

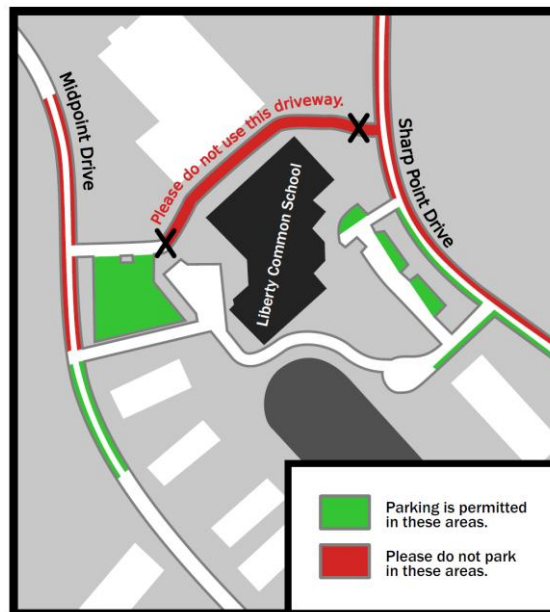
Afternoon pick up times | 2:45- 3:30

### Helpful hints

1. Arrive early to school so that students are not tardy and rushed.
2. Students should have all backpacks and materials ready to leave car.
3. Pull all the way forward in the carpool lane (even if there is no one behind you).
4. Do not leave your car.
5. Pick up and drop off in the same locations for morning and afternoon.
6. Let all family members and relatives know these traffic procedures.
7. Drive slow. You are in a school zone with a lot of children.
8. When exiting Sharp Point Drive, do not turn left on Prospect.

### Parking

Please do not park in the red zones during drop off and pick up times. There are restrictions to these parking areas for safety reasons and respect to neighbors in the business park. The traffic increases considerably during these times and we need to allow for business park traffic to move freely.

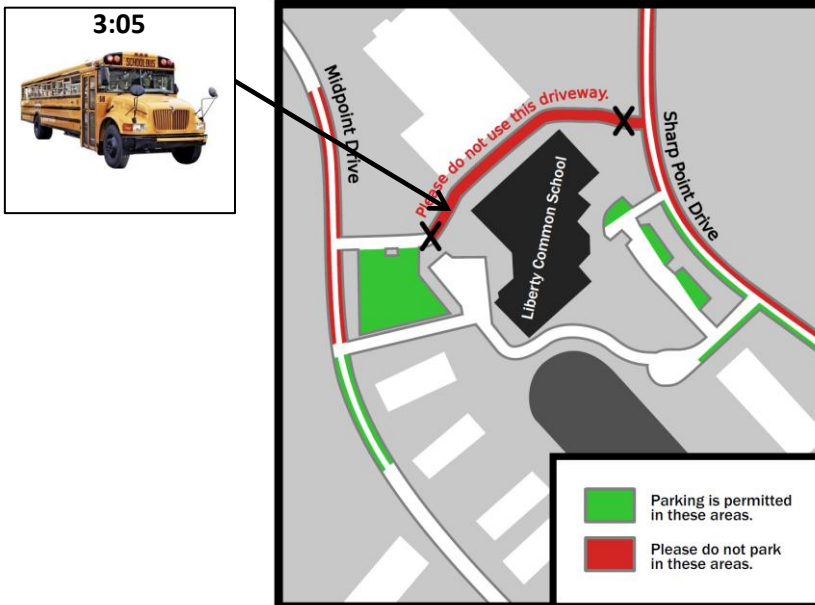


## Bus Shuttle

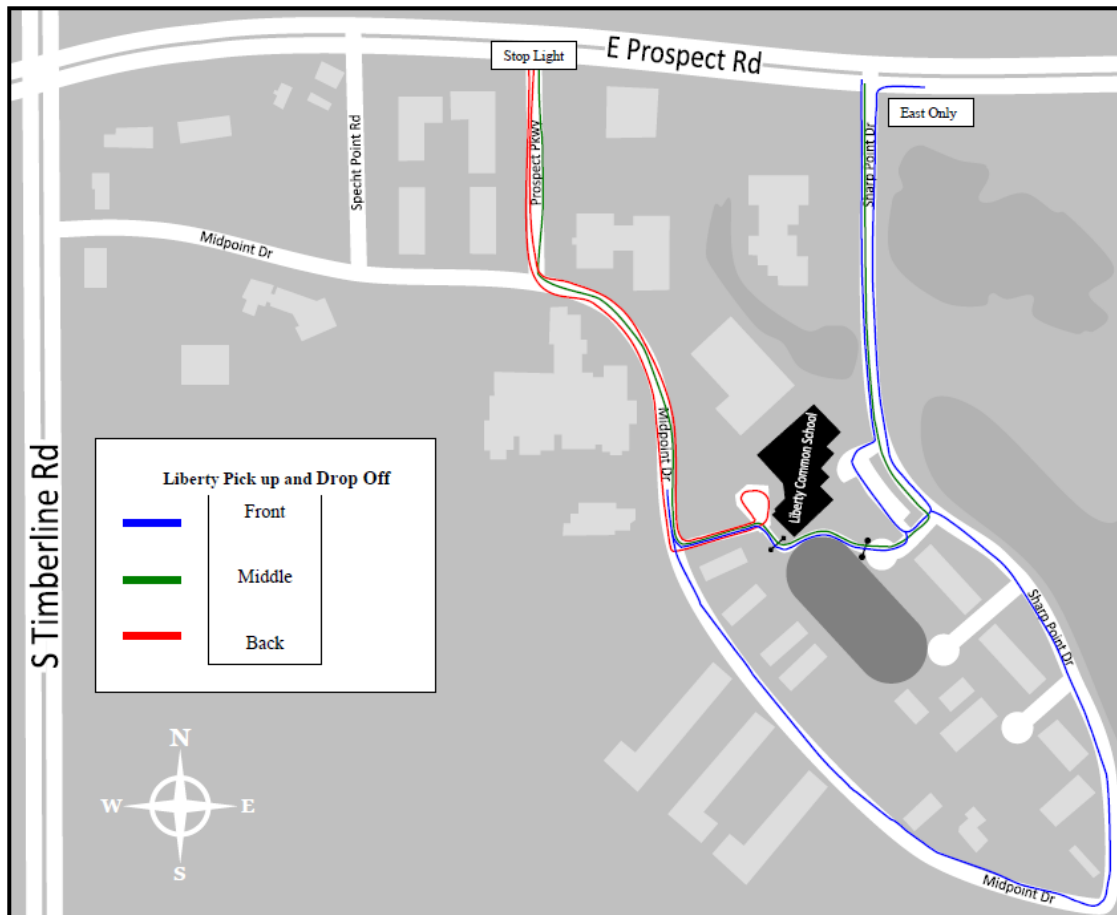
There will be a bus shuttle that will run every day after school. Below is the bus schedule.

- 2:50 High School (front of building)
- 3:05 Elementary School (**at location below**)
- 3:20 High School (front of building)
- 3:35 Elementary School (front of building)

### Elementary Bus Student Pick Up Location



## How to drop off and pick up at Liberty Common



- **Step One**

Decide where you want to drop off and pick up each day (Front, Middle, or Back).

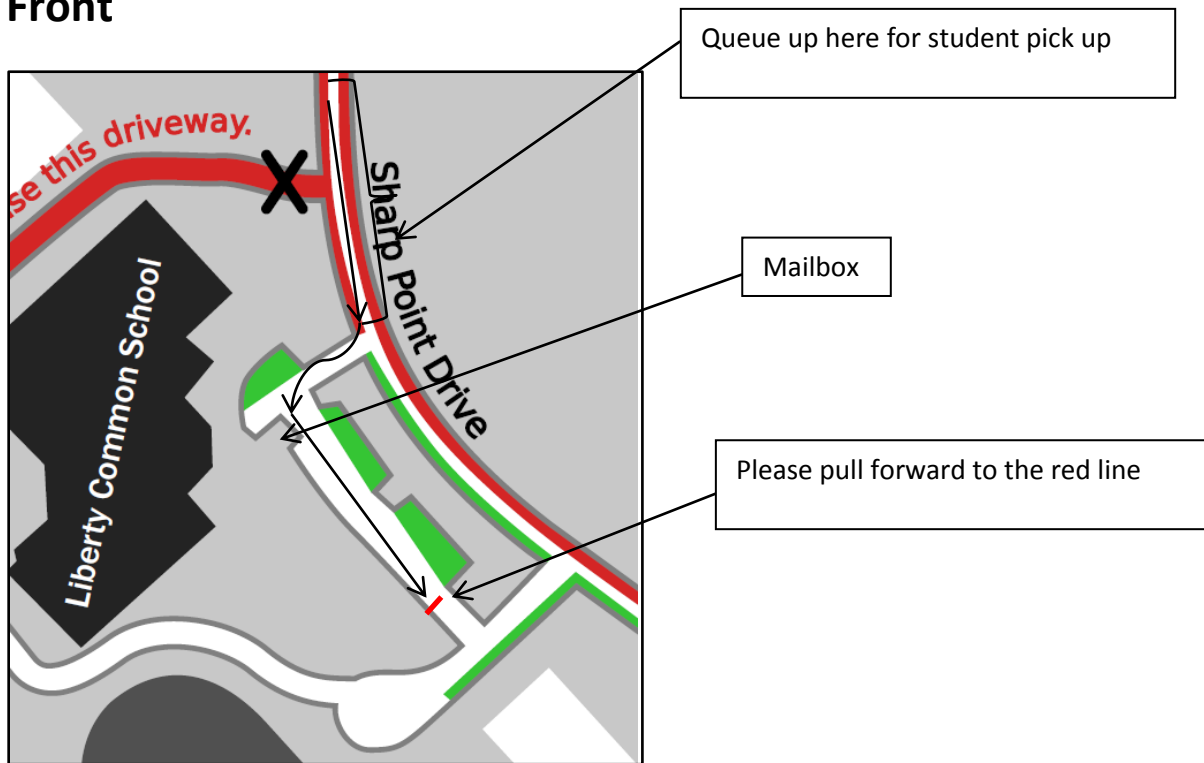
- **Step Two**

Learn this area and understand what to do (see below).

- **Step Three**

Communicate this with your child

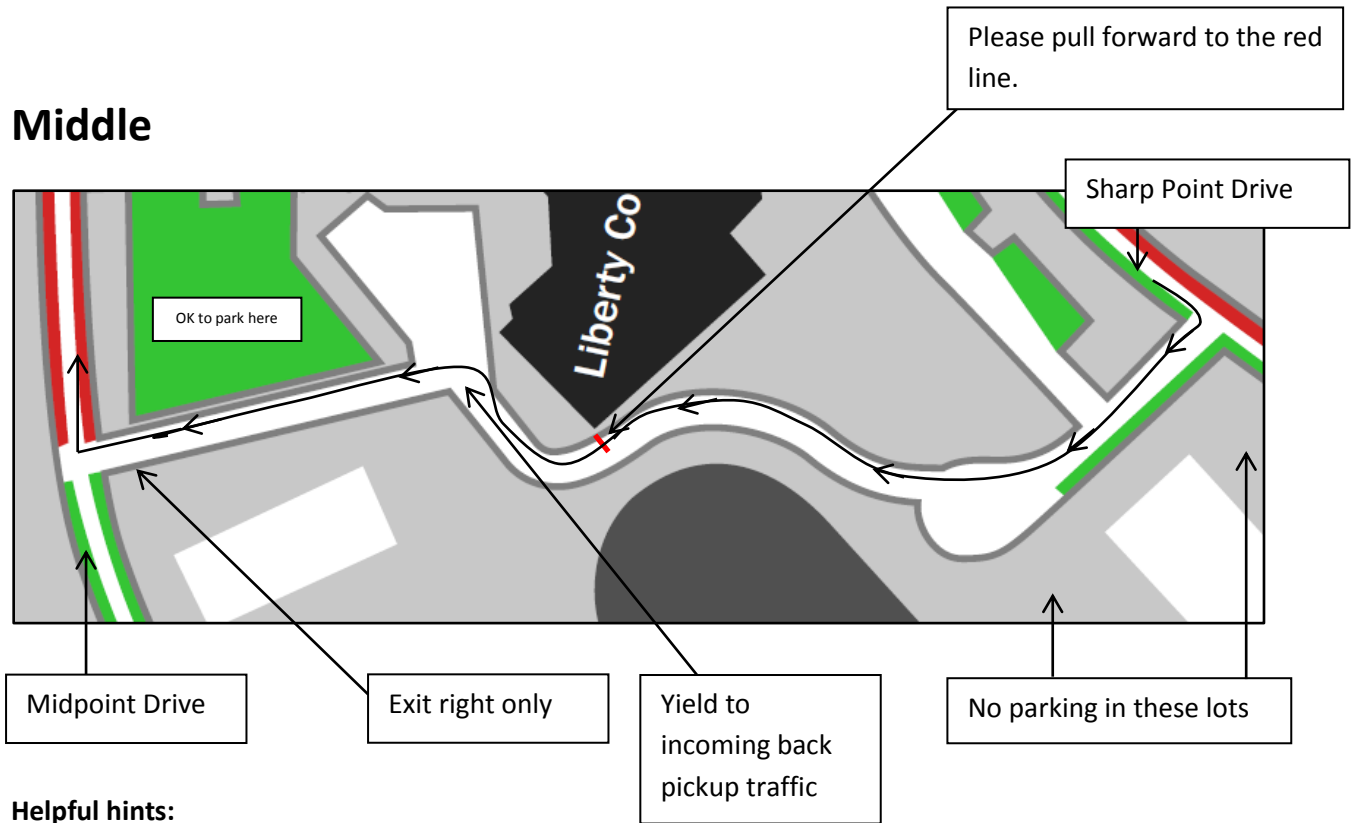
## Front



### Helpful hints:

1. You are free to park in any green zones. Please do not park in the red zones. There can be a lot of traffic on Sharp Point.
2. Stay in your car.
3. Pull all the way forward.
4. Only load cars once past the mailbox.
5. Do not have students load in the Queue up area.
6. Parents should escort students across pickup lane and to cross the street.
7. Once your car is loaded, you are ok to pull out slowly to the left and pass others waiting in line. This will allow others to pull forward to pick up or drop off.
8. When exiting Sharp Point Drive, do not turn left on Prospect.

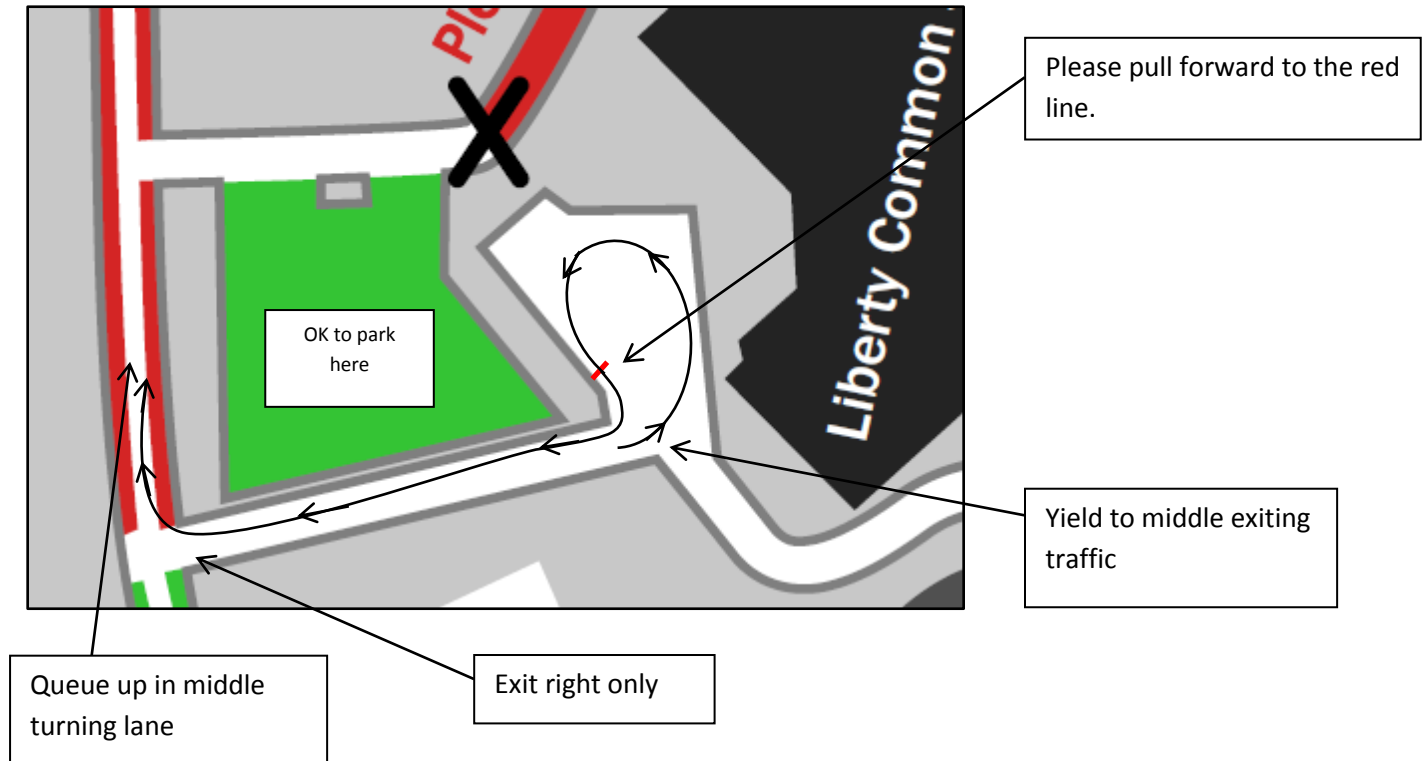
## Middle



### Helpful hints:

1. You are free to park in any green zones. Please do not park in the red zones. There can be a lot of traffic on Sharp Point.
2. Stay in your car.
3. Pull all the way forward.
4. Only load cars between the entry gate and the corner of the building.
5. Parents should escort students across pickup lane and to cross the street.
6. Yield to cars when entering back pickup zone.
7. Right turn only when entering Midpoint Drive

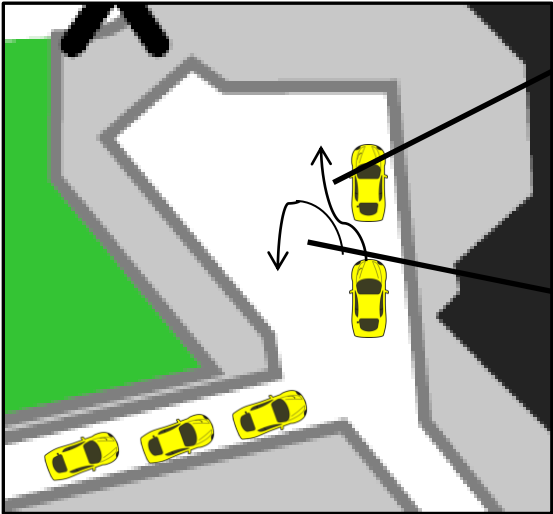
## Back



### Helpful hints:

1. You are free to park in any green zones. Please do not park in the red zones. AE has given us permission to park in their lot during drop off and pick up.
2. Stay in your car.
3. Pull all the way forward.
4. Only load cars between the walk up ramp and the red line
5. Parents should escort students across pickup lane and to cross the street.
6. Yield to cars exiting middle pick up zone when entering.
7. Right turn only when entering Midpoint Drive
8. Drive slow when entering the back pick up
9. If a car is stopped in front of you, do not pull past the car on the left. Students may be exiting the car on the left side (see below).

Please DO NOT pull past cars on the left.



Please do not go around.

You may U turn to leave after dropping off